

Experience Different! Tintri VMstore SecureVM delivers real-time data security with no impact on application performance.

Security is top-of-mind for many organizations, especially in finance, government, defense, and healthcare industries. There are often strict policy requirements or regulations to keep data secure at all times to protect against theft even during drive replacement or routine hardware maintenance.

Tintri has partnered with Gemalto, makers of the leading external key management suite, SafeNet KeySecure. With KeySecure, easily lock down data if one or more drives are stolen, or even if the entire system is compromised. Cryptographically lock the system (will not boot) simply by disabling key export in the Gemalto console. KeySecure uses the open platform KMIP, is FIPS 140-2 validated, and allows consolidation of key management across heterogeneous storage and other secure appliances.

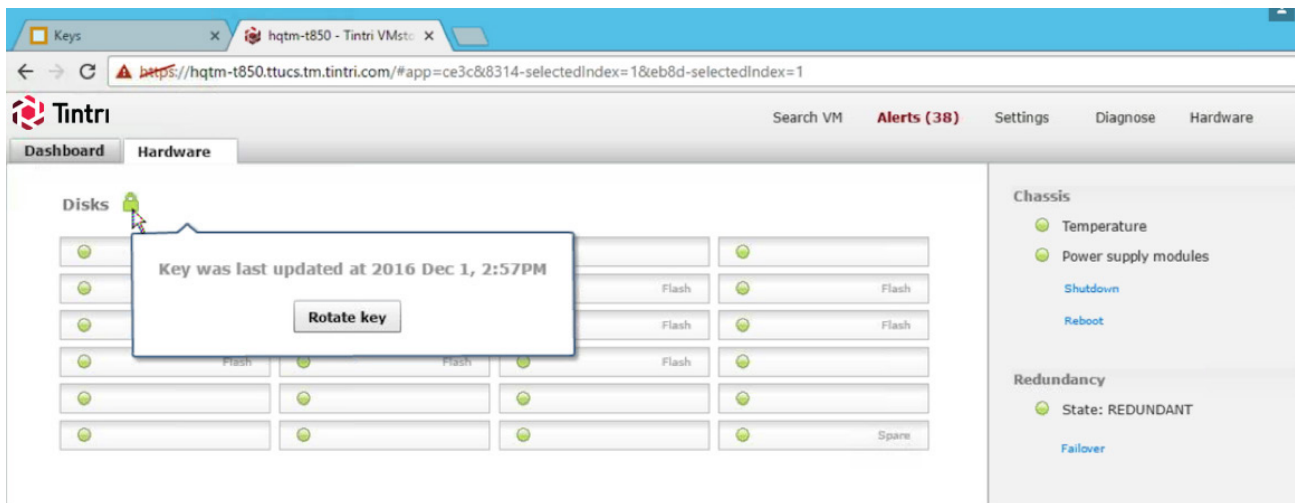


Figure 1. VMstore Storage Management View

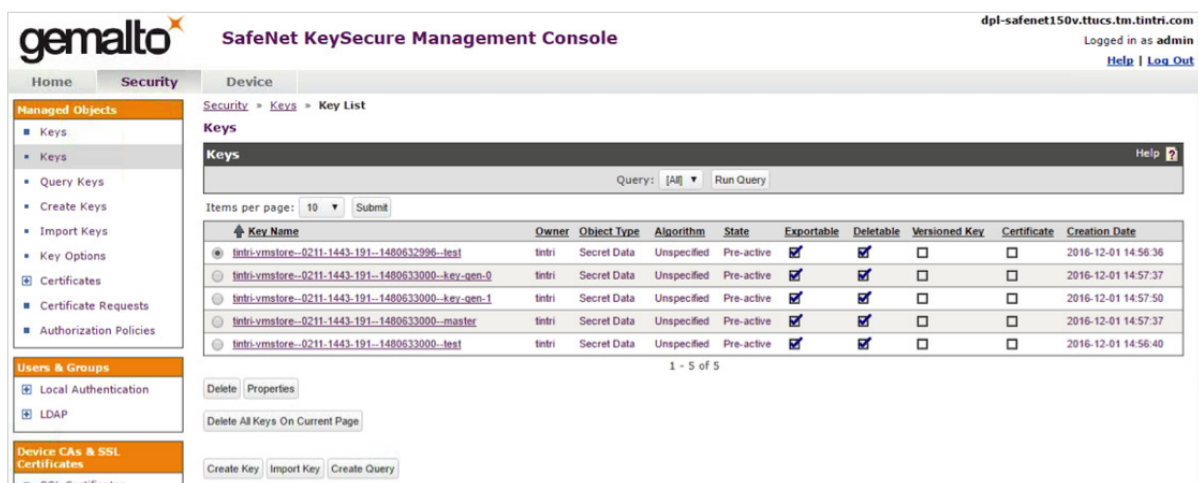


Figure 2. SafeNet KeySecure Management Console View

## Ensure the Safety of Your Data

- External key rotation and security is guaranteed through Gemalto's award winning KeySecure platform
- Data is encrypted inline using AES-256-bit algorithms without any performance or capacity impact
- SecureVM works in conjunction with self-encrypting drives on Tintri VMstore systems
- Inbuilt key rotation mechanism manages and rotates keys on demand from the UI if the key is compromised for any reason

## Responsive Security with No Performance Impact

- No wait time before all data gets completely encrypted or "data outage period" that causes nightly script to crash
- Effective capacity remains the same
- No performance penalty for turning on encryption

## Tintri VMstore Management Simplicity

- Turn on encryption of data at rest anytime to instantaneously meet your compliance regulations
- SecureVM is truly simple to activate and manage
- Tintri interface, single-click key rotation saves time and reduces complexity

## Real-World Results

**"Encryption with Tintri SecureVM was as simple as turning it on. Click. Click. DONE. We had no performance degradation whatsoever, and encrypted-at-rest data makes our compliance department very happy!"**

*Scott Zemke, Systems Engineer, University of Arkansas Sam M. Walton College of Business Technology Center*

Experience Different! To learn more about how Tintri VMstore and SecureVM can turbo-charge your business success through a simplified, Intelligent Infrastructure, visit [tintri.com/vmstore](http://tintri.com/vmstore). Or better yet, contact your Tintri representative or infrastructure partner and request a demo of VMstore SecureVM.